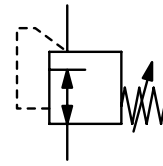


|                           |  |                          |                    |
|---------------------------|--|--------------------------|--------------------|
| <b>Description</b>        | The low pressure regulator is manually adjustable. Version R01-4 has an integrated safety valve which opens at a pressure of 1.5 times of the max. outlet pressure, thus not suitable for gas pressure regulation in closed rooms. |                          |                    |
| <b>Media</b>              | compressed air, propane, butane or other non-corrosive gases   |                          |                    |
| <b>Supply pressure</b>    | max. 16 bar at R01-5/-6, max. 10 bar at R01-4  |                          |                    |
| <b>Accuracy</b>           | at min. supply pressure and flow: < 5% FS pressure deviation<br>at max. supply pressure and flow: < 15% FS pressure deviation<br>at max. supply pressure without flow: < 25% FS pressure deviation                                 |                          |                    |
| <b>Air consumption</b>    | without constant bleed   |                          |                    |
| <b>Adjustment</b>         | R01-5/-6: by adjusting knob a. dial enabling eleven settings for different outlet pressures<br>R01-4: by T-handle with locknut   | <b>Mounting position</b> | any                |
| <b>Relieving function</b> | non-relieving  |                          |                    |
| <b>Gauge port</b>         | G $\frac{1}{4}$ on one side of the body, except on R01-5/-6  |                          |                    |
| <b>Temperature range</b>  | -20 °C to 60 °C / -4 °F to 140 °F  |                          |                    |
| <b>Material</b>           | Body: zinc die-cast  | Elastomer: NBR/Buna-N    | Inner valve: brass |



**G $\frac{1}{4}$  up to G $\frac{1}{2}$**   
**25 ... 50/1400 mbar**

| Dimensions |    |    | Flow rate | Supply pressure | Connection thread | Pressure range | Order number |
|------------|----|----|-----------|-----------------|-------------------|----------------|--------------|
| A          | B  | ØT |           |                 |                   |                |              |
| mm         | mm | mm | l/min     | empfohlen       | G                 | mbar           |              |

| Low pressure regulator |    |    | supply pressure max. 16 bar, non-relieving, without gauge port |     |                    | R01-5/-6     |            |
|------------------------|----|----|--|-----|--------------------|--------------|------------|
| 100                    | 68 | 68 | 13   | 2.5 | G $\frac{1}{4}$    | 25 ... 50    | R01-524-00 |
| 100                    | 68 | 68 | 7  | 6.0 | G $\frac{1}{4}$    | 20 ... 200   | R01-524-05 |
| 100                    | 68 | 68 | 26   | 6.0 | G $\frac{1}{4}$    | 70 ... 200   | R01-522-01 |
| 100                    | 68 | 68 | 50   | 2.5 | G $\frac{1}{4}$    | 30 ... 200   | R01-524-06 |
| 103                    | 50 | 83 | 40   | 6.0 | G $\frac{3}{8}$ *1 | 350 ... 1400 | R01-626    |
| 103                    | 50 | 83 | 140  | 6.0 | G $\frac{3}{8}$ *1 | 350 ... 1400 | R01-627    |

| Low pressure regulator |     |     | supply pressure max. 10 bar, non-relieving |     |                 | R01-4      |            |
|------------------------|-----|-----|--|-----|-----------------|------------|------------|
| 138                    | 127 | 117 | 140  | 2.5 | G $\frac{1}{2}$ | 20 ... 150 | R01-411-01 |

| Accessories, enclosed |   |                |           |  |
|-----------------------|---|----------------|-----------|--|
| pressure gauge        | Ø 63 mm, 0 ... 250 mbar, G $\frac{1}{4}$ , capsule type | for R01-411-01 | MA6302-C3 |  |



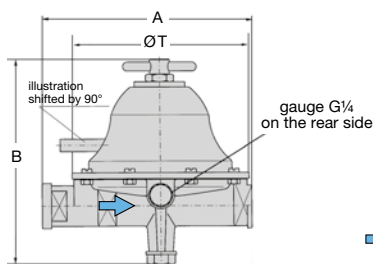
R01-524-00



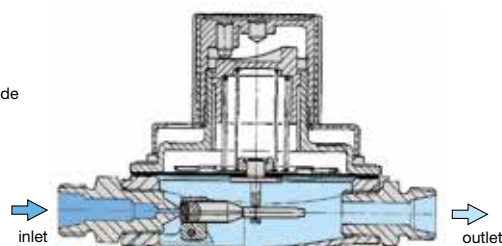
R01-627



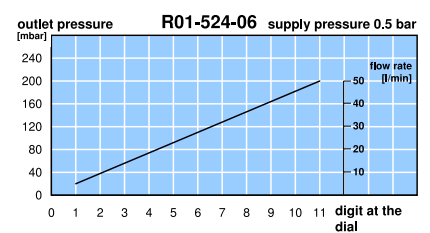
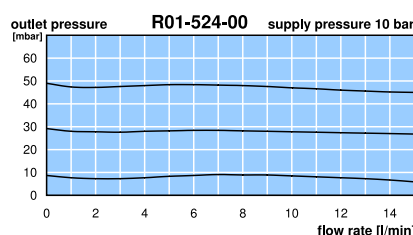
R01-411-01



R01-411



cross-section



\*1 G $\frac{1}{4}$  eingangsseitig \*2 G $\frac{1}{2}$  eingangsseitig

\* Product group

Gauges: see chapter for measuring devices

PDF CAD  
www.aircom.net



Order example:  
R01-524-00